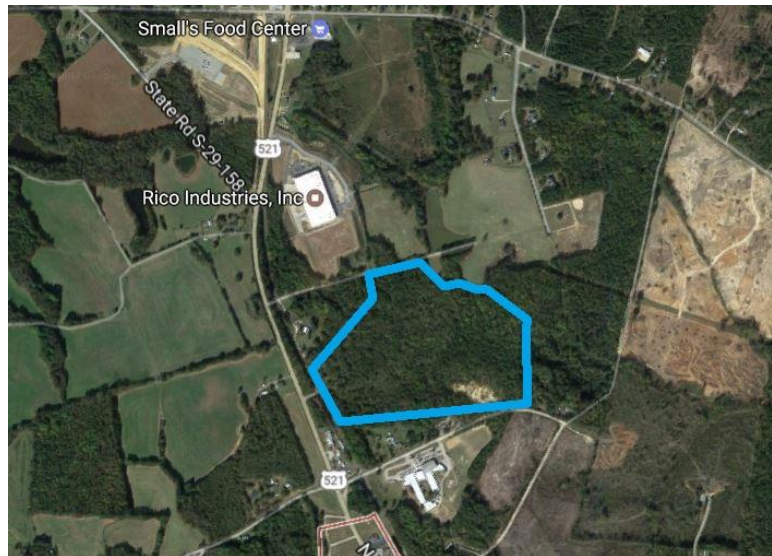


Ann Taylor Site



Location	US 521 and Solar Road Heath Springs, SC
Price	\$7,500/acre
Size	58.00 Acres
Additional Acreage Available	N/A
Water	Town of Heath Springs
Sewer	Town of Heath Springs
Electricity	Lynches River Electric Cooperative
Natural Gas	Lancaster County Natural Gas Authority
Fiber	Comporium Communications
Connectivity	
Highway	US Hwy 521 (Frontage)
Interstate	I-77 (27 Miles)
Rail	Lancaster and Chester Railroad
Air	Charlotte Douglas International Airport (55 miles) McWhirter Field-General Aviation (16 Mles)
Additional Information	Click or tap here to enter text.

Contact

Jamie Gilbert
Director of Economic Development
(803) 286-3633
jgilbert@lancastercountysc.net

