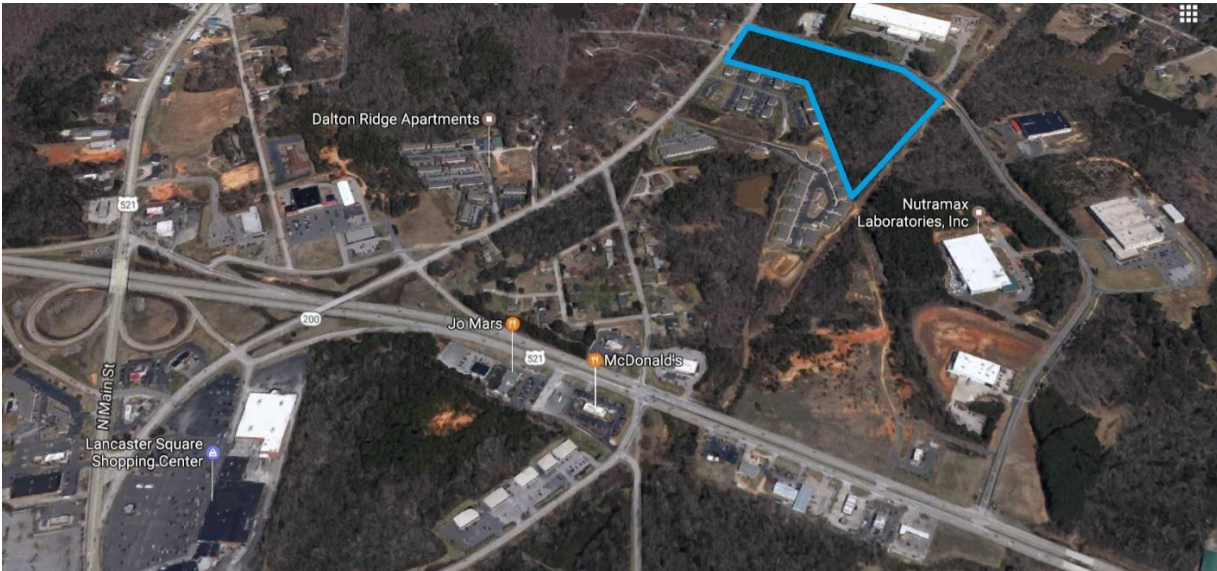


## Lancaster Business Park



The Lancaster Business Park is a county owned park with one remaining lot for purchase. The Park is home to NutraMax Laboratories, Cooley Group, Nibrol and Valmet.

<b>Location</b>	SC 9 and Quality Drive Lancaster, SC
<b>Price</b>	\$162,000
<b>Size</b>	16.20 Acres
<b>Additional Acreage Available</b>	N/A
<b>Water</b>	City of Lancaster Water and Sewer
<b>Sewer</b>	City of Lancaster Water and Sewer
<b>Electricity</b>	Duke Energy
<b>Natural Gas</b>	Lancaster County Natural Gas Authority
<b>Fiber</b>	Comporium Communications
<b>Connectivity</b>	
<b>Highway</b>	SC 9 (1/2 Mile)
<b>Interstate</b>	I-77 (17 Miles)
<b>Rail</b>	No
<b>Air</b>	Charlotte Douglas International Airport (39 Miles) McWhirter Field – General Aviation (7 Miles)
<b>Additional Information</b>	The Lancaster Business Park provides excellent access to the county's large and productive manufacturing workforce.

## Contact

Jamie Gilbert  
Director of Economic Development  
(803) 286-3633  
[jgilbert@lancastercountysc.net](mailto:jgilbert@lancastercountysc.net)

